

RACK MOUNT ENCLOSURES AND ACCESSORIES

Snap-in Adapter Plates	120-121
Patch Panels	122
1U Patch Panel Enclosures	123-124
2U and 3U Patch Panel Enclosures	125
4U Patch Panel Enclosures	126
2U Fiber Storage Enclosure	126
3U and 4U Splice Enclosure	127
Splice Trays	127
2U Splice and Patch Enclosure	128
Splice Trays	128

Chapter Summary

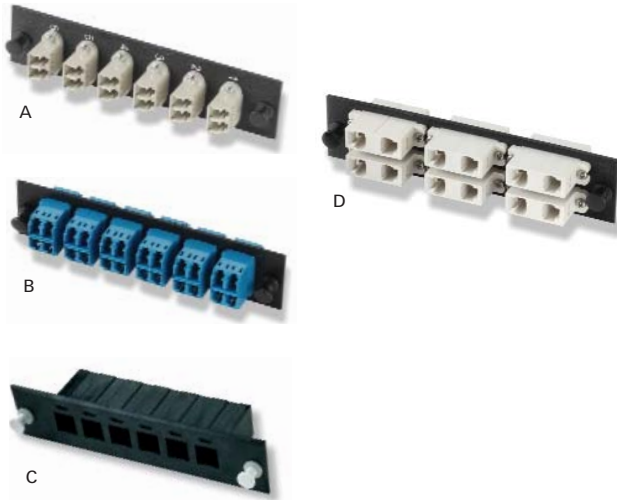
- Rack mount enclosures provide options for rack placement and protection of fiber terminations
- Complete line of connectivity, splice and size options – up to 288 fibers
- Splice and patch enclosures
- Unloaded enclosures accept AMP NETCONNECT Snap-in Adapter Plates
 - Mix and match connector types in the same enclosure
- Loaded enclosures
- Cable management and accessories

2.5



Snap-In Adapter Plates

2.5

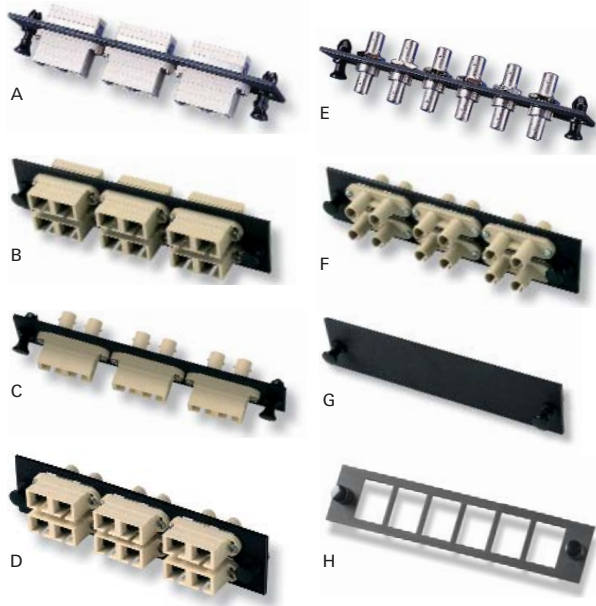


Product Facts

- All Snap-in Adapter Plates fit AMP NETCONNECT unloaded Optical Fiber Enclosures included in this chapter
- MT-RJ Jack Adapter Plates:
 - Hold up to six (6) MT-RJ (standard or secure) Jacks or Pigtail Jack Cable Assemblies
 - Accepts labeling icons in Chapter 8
- MT-RJ Plug Adapter Plates hold up to twelve (12) MT-RJ Plugs (standard only)
- LC SECURE plugs will only mate with the same color LC SECURE adapter.
- Package quantity = 1 per pack

Adapter Description	Fibers	Type	Adapter Color	Figure	Part Number
LC Duplex	12	Multimode (62.5/125,OM1)	Beige	A	1374463-2
		Multimode (50/125,OM2)	Black	–	1374463-4
		Multimode (XG LO 50/125,OM3)	Aqua	–	1374463-5
		Single-mode (UPC)	Blue	–	1374463-1
		Single-mode (APC)	Green	–	1374463-6
LC Duplex	24	Multimode (62.5/125,OM1)	Beige	–	1435516-2
		Multimode (50/125,OM2)	Black	–	1435516-4
		Multimode (XG LO 50/125,OM3)	Aqua	–	1435516-5
		Single-mode (UPC)	Blue	B	1435516-1
		Single-mode (APC)	Green	–	1435516-6
LC SECURE Duplex	24	Multimode/Single-mode	Red	–	1499702-2
		Multimode/Single-mode	Yellow	–	1499703-2
		Multimode/Single-mode	Green	–	1499704-2
		Multimode/Single-mode (UPC Polish)	Blue	–	1499705-2
		Multimode/Single-mode	Rose	–	1499706-2
		Multimode/Single-mode	Aqua	–	1499707-2
		Multimode/Single-mode	Brown	–	1499708-2
		Multimode/Single-mode	Violet	–	1499709-2
		Multimode/Single-mode	Orange	–	1499710-2
		Multimode/Single-mode	Slate	–	1499711-2
MT-RJ, Holds 6 Jacks	12	–	–	C	1278328-3
MT-RJ, 12 Plugs	24	Multimode (62.5/125,OM1)	Beige	D	1435440-1
		Multimode (50/125,OM2)	Black	–	1435440-2
		Single-mode (UPC)	Blue	–	1435440-3
SC Simplex	6	Multimode (62.5/125,OM1)	Beige	–	559517-7
		Multimode (50/125,OM2)	Black	–	559517-3
		Multimode (XG LO 50/125,OM3)	Aqua	–	559517-8
		Single-mode (UPC)	Blue	–	559517-1
		Single-mode (APC)	Green	–	559517-2

Note: UPC - Ultra Physical Contact, APC - Angled Polish Connector



Product Facts

- All Snap-in Adapter Plates fit AMP NETCONNECT unloaded Optical Fiber Enclosures included in this chapter
- SL Series Discrete Adapter Plates accept SL Series Jacks (see Chapter 2.2) and Multimedia Inserts (see Chapters 1.2 & 2.2)
- Package quantity = 1 per pack

2.5

Adapter Description	Fibers	Type	Adapter Color	Figure	Part Number
SC Duplex	6	Multimode (62.5/125,OM1)	Beige	A	559558-1
		Multimode (50/125,OM2)	Black	-	559558-5
		Multimode (XG LO 50/125,OM3)	Aqua	-	559558-6
		Single-mode (UPC)	Blue	-	559558-2
		Single-mode (APC)	Green	-	559558-7
SC Duplex	12	Multimode (62.5/125,OM1)	Beige	B	559596-1
		Multimode (50/125,OM2)	Black	-	559596-5
		Multimode (XG LO 50/125,OM3)	Aqua	-	559596-6
		Single-mode (UPC)	Blue	-	559596-2
		Single-mode (APC)	Green	-	559596-3
SC to ST Duplex	6	Multimode (62.5/125,OM1)	Beige	C	559601-1
		Multimode (50/125,OM2)	Black	-	559601-4
		Multimode (XG LO 50/125,OM3)	Aqua	-	559601-5
		Single-mode (UPC)	Blue	-	559601-6
SC to ST Duplex	12	Multimode (62.5/125,OM1)	Beige	D	1278368-1
		Multimode (50/125,OM2)	Black	-	1278368-2
		Multimode (XG LO 50/125,OM3)	Aqua	-	1278368-3
		Single-mode (UPC)	Blue	-	1278368-5
ST Simplex	6	-	Metallic	E	559557-1
		Single-mode (UPC)	Metallic	E	559515-2
ST Duplex	12	Multimode (62.5/125,OM1)	Beige	F	1278567-1
		Single-mode (UPC)	Blue	-	1278567-2
MPO 6 Port	-	-	Black	-	1374598-1
Blank	-	-	-	G	559523-1
SL 6 Port	-	-	-	H	1479506-1

Note: UPC - Ultra Physical Contact, APC - Angled Polish Connector

1U Rack Mount Fiber Optic Patch Panel
PART NUMBER 1777125-1



Fiber Densities

Insert Type	Fiber Density (max)	Duplex Port Density (max)
6-Fiber Adapter Plates	18	9
12-Fiber Adapter Plates or MPO Cassettes	36	18
24-Fiber Adapter Plates or MPO Cassettes	72	36

Product Facts

- Accepts three (3) Snap-in Adapter Plates or MPO Cassettes (see this Chapter and 2.4, not included)
- Fits standard TIA 19" rack
- 1U (1.75")



Panel Holds 3 Snap-in Adapter Plates or MPO Cassettes (not included)

2U Rack Mount Fiber Optic Patch Panel
PART NUMBER 1435847-1



Fiber Densities

SL Series Insert (not included with panel)	Fiber Density (max)	Duplex Port Density (max)
MT-RJ Jack Housing, 2 Fiber	144	72
LC Coupler, 2 Fiber	144	72
ST Coupler, 1 Fiber	72	36

Product Facts

- Rack Mount Panel holds 72 SL Series Fiber Inserts (see Chapter 2.2, not included)
- SL Series Inserts not included with Panel (see Chapter 1.2)
- Fits standard TIA 19" rack
- Integrated front (3") and rear (8") cable management trays
- 2U (3.5")



Panel Holds 72 SL Series Fiber Inserts (not included)

1U Rack Mount Patch Enclosures



Description	Height	Width	Part Number
Standard Cables	1U (1.75")	19"	1348876-4
Armored and Multiple Trunk Cables	1U (1.75")	19"	1435555-1

Fiber Densities

Insert Type	Fiber Density (max)	Duplex Port Density (max)
6-Fiber Adapter Plates	18	9
12-Fiber Adapter Plates or MPO Cassettes	36	18
24-Fiber Adapter Plates or MPO Cassettes	72	36

Product Facts

- Accept three (3) Snap-in Adapter Plates or MPO Cassettes (see this Chapter and 2.4, not included)
- Enclosure 1348876-4 holds two FOSC 500 AA splice trays
 - P/N: 3-1201266-4 (not included)
 - Each tray holds 24 Fibers
- Quick release Slide and tilt drawer
- Forward, flush or recessed mounting
- Fit standard TIA 19" rack
- Include fiber management rings
- Standard Cable Enclosure includes cable strain relief
- Armored and Multiple Trunk Cables Enclosure includes:
 - Special design to hold armored or multiple trunk cables in place
 - Large rear cable entry with tie down brackets that can be mounted inside or outside of Enclosure

2.5

1U Rack Mount Patch Enclosure



Description	Height	Width	Part Number
Panel Enclosure	1U (1.75")	19"	1-1657014-7

Fiber Densities

Insert Type	Fiber Density (max)	Duplex Port Density (max)
6-Fiber Adapter Plates	18	9
12-Fiber Adapter Plates or MPO Cassettes	36	18
24-Fiber Adapter Plates or MPO Cassettes	72	36
Splice Trays (2)	24	—

Product Facts

- Accept three (3) Snap-in Adapter Plates or MPO Cassettes (see this Chapter and 2.4, not included)
- Heavy duty, smoothly operating, slide mounting brackets
- Clear top removable cover
- Flush mount
- Holds 2 Splice trays (not included)
 - P/N: 1639192-1 (2 pack)
- Fits standard TIA 19" rack

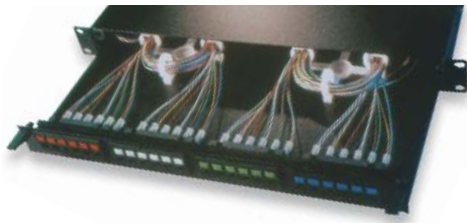


Panel Holds 3 Snap-in Adapter Plates or MPO Cassettes (not included)

123

1U MT-RJ Rack Mount Patch Enclosure

PART NUMBER 1206704-4



Fiber Densities

Insert Type	Fiber Density (max)	Duplex Port Density (max)
2-Fiber MT-RJ Jacks	48	24

Product Facts

- 1U 48-Fiber Rack Mount Enclosure high-density solution
- Loaded with housings for MT-RJ Patch Panel Jacks
- Holds up to twenty-four (standard or secure) MT-RJ Patch Panel Jacks or MT-RJ Pigtail Jack Cable Assemblies (each purchased separately, see Chapter 2.3)
- Quick release Slide and tilt drawer
- Cable strain relief and management rings included
- Forward, flush or recessed mounting
- Fits standard TIA 19" rack
- Accepts icons for identification (see Chapter 8)

1U LC, SC, and ST Rack Mount Patch Enclosures



Product Facts

- Enclosures pre-loaded with LC, SC, or ST Adapters
- Quick release Slide and tilt drawer
- Cable strain relief and management rings included
- Forward, flush or recessed mounting
- Fits standard TIA 19" rack
- Enclosure 1348876-4 holds two FOSC 500 AA splice trays
 - P/N: 3-1201266-4 (not included)
 - Each tray holds 24 Fibers

Description	Coupler Color	Fiber Density	Duplex Port Density	Part Number		
ST	Simplex	Multimode	Metallic	12	6	2-1206114-4
				24	12	4-1206114-4
SC	Duplex	Multimode	Beige	12	6	2-1206138-4
				24	12	4-1206138-4
		Single-mode	Blue	12	6	2-1348960-4
				24	12	4-1348960-4
LC	Duplex	Multimode	Beige	24	12	2-1671000-8
				48	24	4-1671000-8
		Single-mode	Blue	24	12	2-1671000-4
				48	24	4-1671000-4

2U Rack Mount Patch Enclosures



Description	Height	Width	Part Number
Standard Cables	2U (3.50")	19" or 23"	559542-2
Armored and Multiple Trunk Cables	2U (3.50")	19" or 23"	1435556-1

Fiber Densities

Insert Type	Fiber Density (max)	Duplex Port Density (max)
6-Fiber Adapter Plates	24	12
12-Fiber Adapter Plates or MPO Cassettes	48	24
24-Fiber Adapter Plates or MPO Cassettes	96	48

Product Facts

- Accept up to four (4) Snap-in Adapter Plates or MPO Cassettes (see this Chapter and 2.4, not included)
- Removable front and rear covers for easy access and installation
- Front and rear fiber/cable management rings
- Edge guard on front cable entries for cable assembly protection
- Forward, flush or recessed mounting
- Fits standard TIA 19" and 23" racks
- Standard Cable Enclosure includes cable strain relief
- Armored and Multiple Trunk Cable Enclosure includes:
 - Special design to hold armored or multiple trunk cables in place
 - Large rear cable entry with tie down brackets that can be mounted inside or outside of Enclosure
- Shown loaded with 6-Fiber Duplex SC Snap-in Adapter Plates (not included)

2.5

3U Rack Mount Patch Enclosures and Accessories



Standard
Front



Back

Description	Height	Width	Part Number
Standard Cables	3U (5.25")	19" or 23"	559614-2
Armored and Multiple Trunk Cables	3U (5.25")	19" or 23"	1435557-1
3U Security Kit	-	-	1435187-2

Fiber Densities

Insert Type	Fiber Density (max)	Duplex Port Density (max)
6-Fiber Adapter Plates	48	24
12-Fiber Adapter Plates or MPO Cassettes	96	48
24-Fiber Adapter Plates or MPO Cassettes	192	96

Product Facts

- Accept up to eight (8) Snap-in Adapter Plates or MPO Cassettes (see this Chapter and 2.4, not included)
- Removable front and rear covers for easy access and installation
- Front and rear cable management rings
- Edge guard on front cable entries for cable assembly protection
- Forward, flush or recessed mounting
- Fits standard TIA 19" and 23" racks
- Standard Cable Enclosure includes cable strain relief
- Armored and Multiple Trunk Cable Enclosure includes:
 - Special design to hold armored or multiple trunk cables in place
 - Large rear cable entry with tie down brackets that can be mounted inside or outside of Enclosure
- Security Kit includes two (2) locks and one (1) aluminum front door (black)
 - For use with 3U enclosure 559614-2 only
- Shown loaded with 12-Fiber MT-RJ Snap-in Adapter Plates (not included)

125

4U Rack Mount Patch Enclosures and Accessories



Description	Height	Width	Part Number
Standard Cables	4U (7.0")	19" or 23"	559552-2
Armored and Multiple Trunk Cables	4U (7.0")	19" or 23"	1435558-1
4U Security Kit	-	-	*1435161-2

Fiber Densities

Insert Type	Fiber Density (max)	Duplex Port Density (max)
6-Fiber Adapter Plates	72	36
12-Fiber Adapter Plates or MPO Cassettes	144	72
24-Fiber Adapter Plates or MPO Cassettes	288	144

Product Facts

- Accept twelve (12) Snap-in Adapter Plates or MPO Cassettes (see this Chapter and 2.4, not included)
- Removable front and rear covers for easy access and installation
- Front and rear cable management rings
- Edge guard on front cable entries for cable assembly protection
- Forward, flush or recessed mounting
- Fits standard TIA 19" and 23" racks
- Standard Cable Enclosure includes cable strain relief
- Armored and Multiple Trunk Cable Enclosure includes:
 - Special design to hold armored or multiple trunk cables in place
 - Large rear cable entry with tie down brackets that can be mounted inside or outside of Enclosure
- Security Kit includes two (2) locks and one (1) aluminum front door (black)
 - *For use with 4U enclosure 559552-2 only
- Shown loaded with 6-Fiber ST Snap-in Adapter Plates (not included)

Rack Mount Fiber Management Enclosures and Accessories

PART NUMBER 1435808-1



Front, Extended

Product Facts

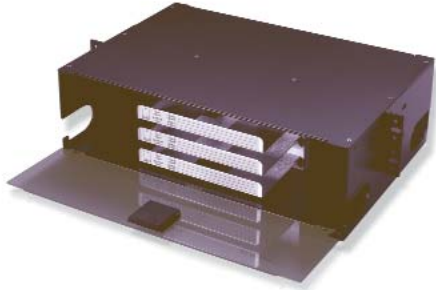
- Holds excess loops of fiber cable or patch cords
- Drawer style
- Cable Management loops included
- 2U (3.50")

Accessories for Rack Mount Enclosures

Description	Cable Diameter	Figure	Part Number
Cable Strain Relief	3.5 - 8mm	A	1206144-1
	9 - 14mm	B	1206145-1
Cable Management Ring Kit	-	C	1206146-1



Rack Mount Splice Enclosures



Description		Part Number
3U	3 Splice Tray Holders	559089-2
4U	4 Splice Tray Holders	1435990-2

Fiber Density/Splice Tray Capacity

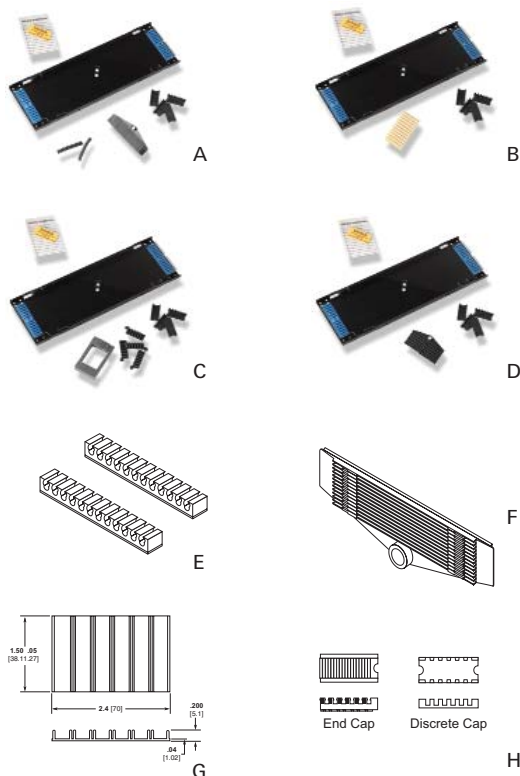
Insert Type	Fiber Count (max)	Splice Tray Holder Capacity (splice trays)
3U Fiber Density	72	6
4U Fiber Density	96	8

Product Facts

- Each splice tray holder accepts two (2) splice trays
 - 1435839 or 559433 splice trays (not included)
- Splice tray holders are located in front of unit allowing cable storage in rear
- Removable rear and clear front covers for easy access and installation
- Clear front cover
- Edge guard on front cable entry for cable assembly protection
- Fits standard TIA 19" and 23" racks

2.5

Splice Trays and Accessories for 3U and 4U Rack Mount Splice Enclosures



Product Facts

- Hold up to 12 splices each
- Used with 2U, 3U, and 4U Rack Mount Splice Enclosures
- Accommodates both through (in-line) and end (butt) splice configurations
- Black anodized aluminum construction for durability and clear plastic top for improved fiber visibility
- Each splice tray includes clear plastic cover, end caps for fiber retention, and splice holders as listed
- Splice and Fiber Holders are also available separately
- 559433 splice tray holders found in Chapter 2.6

Splice Trays with Splice Holders

Description	Included Splice Holder	Figure	Part Number
Splice Tray	Fusion with sleeve & Elastomeric	A	1435839-1
	CORELINK	B	1435839-2
	Universal	C	1435839-3
	Mechanical	D	1435839-4

Splice and Fiber Holders

Description		Figure	Part Number
Splice Holder	Fusion with sleeve & Elastomeric	E	503085-1
	Fusion	F	503086-1
	CORELINK	G	559066-1
Fiber Holder		H	559532-1

Rack Mount Splice and Patch Enclosures, 2U (3.50-inch)

PART NUMBER 1435652-1



Back, Open



Front, Open with Tray Extended

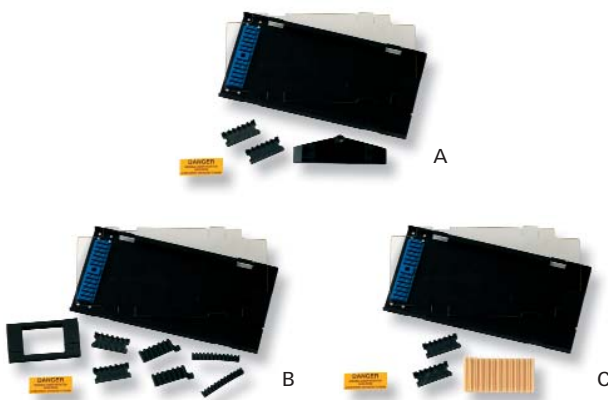
Fiber Density/Splice Tray Capacity

Insert Type	Fiber Count (max)	Splice Tray Holder Capacity (splice trays)
6-Fiber Adapter Plates	18	9
12-Fiber Adapter Plates or MPO Cassettes	36	18
24-Fiber Adapter Plates or MPO Cassettes	72	36
Spliced Fiber Capacity	72	–
Splice Tray Holder Capacity	6	–

Product Facts

- Accepts:
 - Up to three (3) Snap-in Adapter Plates or MPO Cassettes (see this Chapter and 2.4, not included)
 - Up to six (6) 559433 splice trays (see splice accessories table below)
- Removable front and rear covers for easy access and installation
- Front and rear cable management rings
- Edge guard on front cable entries for cable assembly protection
- Forward, flush or recessed mounting
- Fits standard TIA 19" and 23" racks
- Specially designed to hold armored or multiple trunk cables in place
- Large side or rear cable entry features tie down brackets that can be mounted inside or outside of enclosure
- A splicing shelf is located over adapter plates
- Designed as a drawer for easy access

Splice Accessories for Rack Mount Splice and Patch Enclosure



Product Facts

- Can mix and match splice trays
- Splice trays hold up to 12 fusion, elastomeric, or mechanical splices (select appropriate part number)
 - CORELINK mechanical splices in Chapter 2.2
- Black anodized aluminum construction for durability and improved fiber visibility
- Each splice tray includes clear plastic cover, end caps for fiber retention, and appropriate splice holders

Description	Included Splice Holder	Figure	Part Number
Splice Tray	Fusion	A	559433-2
	Elastomeric & Fusion with Sleeve	B	559433-3
	CORELINK	C	559433-4